



FOR IMMEDIATE RELEASE:

CONTACT:

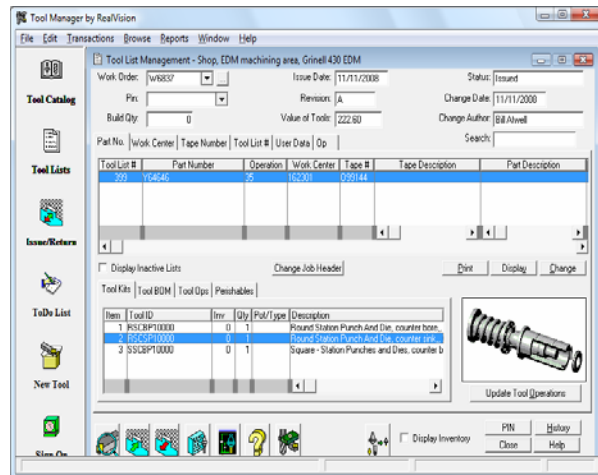
Gil Chacon
RealVision, Inc.
(208) 939-2428, ext. 207
(208) 939-2733
Gil.Chacon@RealMfg.com
www.RealVisionMfgSolutions.com

RealVision, Inc. Announces ToolManager™ 6.0 Comprehensive Tooling and Crib Management for a Paperless Shop Floor

Eagle, ID (09/10/09): - RealVision, Inc., an innovator in manufacturing solutions for the shop floor, today announced the release of ProDocTivity™ ToolManager™ 6.0 software. This new release further simplifies tooling complexity by offering a complete shop floor tool management ecosystem, and with RealVision Connect™ ODBC framework, connecting to IT systems and manufacturing applications has never been easier.

RealVision ToolManager 6.0 is built on the culmination of 25 years of experience in effective shop floor management.

Rick Toth, President of Toth Industries, says "We chose RealVision ToolManager for its built-in flexibility that allows us to tailor shop information for our own shop floor. We can build up information for our tool crib, provide descriptions of our operations for the setup person, and track tool life for the operator."



-More-

“This software is a one-stop solution for tooling and crib management, designed and built by engineers *for* engineers and managers, providing full scalability as business grows, and allowing companies to save time, conserve resources, and go “green” with a paperless solution. ToolManager accurately brings data together from virtually any source using RealVision Connect™ ODBC framework—all from an easy to use Web-based interface,” says Bill Atwell, Founder and President of RealVision.

Managing tooling is complex, and is often under-managed and subject to human error, especially when error-prone manual methods, like spreadsheets and lists, are used to track tooling operations. The results can be costly. Without overarching control of tooling systems, business costs rise, purchasing is more cumbersome, stock level inaccuracies increase, and it’s often difficult to get real-time information from legacy and disparate IT systems.

RealVision ToolManager 6.0 solves these problems by offering a complete tooling solution that scales from small business to enterprise-level shop floors. Moreover, RealVision ToolManager is expandable into an even broader shop floor solution by integrating with other RealVision standalone applications, or with our complete shop floor ProDocTivity suite.

RealVision ToolManager enhancements include:

- Simplified navigation and step by step menu-based instructions with point and click access to key functions.
- RealVision Connect framework – operates within ToolManager to simplify ODBC connectivity and interoperability with legacy and disparate manufacturing and shop floor operations.
- Integrated tool presetting works with existing presetters, or RealVision WebDNC with ToolSet using RS-232.
- Provides full gage management and calibration.
- Automatically generates set-up sheets from tools list

[RealVision ToolManager](#) complementary shop floor solutions include:

More-

- [RealVision Integrator™](#) – integrates tooling and shop floor data as a simplified MES (manufacturing execution system).
- [RealVision DocManager™](#) – integrates tooling data with manufacturing and shop floor documentation; supports “green” efforts.
- [RealVision WebDNC™](#) – enhances inventory control with powerful machine tool tracking and life monitoring.
- [RealVision Preventative Maintenance RPM™](#) – combines tooling and shop floor data with preventative maintenance schedules to help prolong tool and equipment life.
- [RealVision ProDocTivity Suite™](#) – provides complete, integrated and economical shop floor productivity solution portfolio

About RealVision

With 25 years of experience, RealVision Manufacturing Solutions’ unparalleled knowledge of manufacturing and shop floor operations is built into each of its products. Built *by* engineers and *for* engineers, these practical solutions easily adapt to any manufacturing environment to provide all the efficiency and flexibility you need to increase shop floor productivity, integrate tooling data with machines, reduce scrap, maintain equipment life and manage your production systems flawlessly. Contact RealVision today at 1-800-487-1031 to learn how RealVision can boost your business’ bottom line, or visit www.RealVisionMfgSolutions.com .

- END -

