



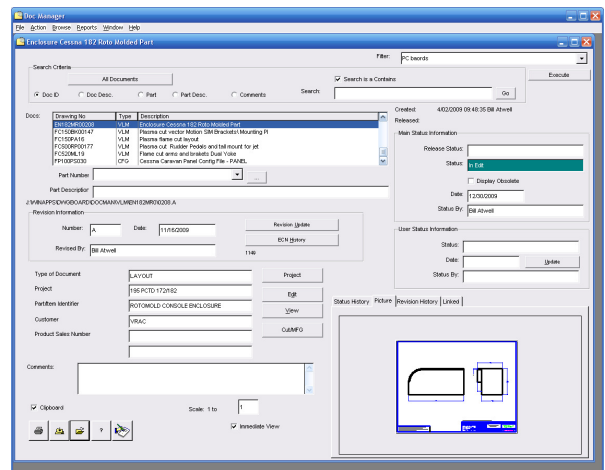
FOR IMMEDIATE RELEASE:

CONTACT:

Gil Chacon
RealVision, Inc.
(208) 939-2428, ext. 207
(208) 939-2733
Gil.Chacon@RealMfg.com
www.RealVisionMfgSolutions.com

RealVision, Inc., Announces the Powerful DocManager 5.0 Manufacturing Documentation Control and Change Management Solution

Eagle, ID (02/09/2010): - RealVision, Inc., an innovator in affordable, practical and customizable manufacturing solutions for the shop floor, today announced the release of ProDocTivity™ DocManager™ 5.0 software. This new release provides enhanced usability, engineering change notice (ECN) functionality, search capabilities and more, simplifying how manufacturing, engineering and QA track changes and collaborate documentation and data types. Plans, CAD drawings, images, sketches, NC programs, BOMs, set up sheets, router information, and more are integrated and easily accessible across departments simply by selecting a part number. With RealVision Connect™ ODBC framework, connecting to IT systems and manufacturing applications, including ERP and databases, is easy.



-More-

“Our software is very affordable with extensive documentation and change management capability; it complements existing ERP systems while offering companies a deeper relationship between shop floor operations and manufacturing and engineering documentation. RealVision software is a great way for companies to go ‘green’ too with a paperless solution,” says Gil Chacon, RealVision, Inc., VP Sales and Marketing.

Controlling manufacturing documentation and data types is a critical step to improving shop floor productivity. Managing documents by controlling revisions and access to hard copies is logistically difficult and prone to human error, sometimes resulting in manufacturing bottlenecks due to inaccurate or outdated documents. Reducing process barriers created by uncontrolled paper while allowing multiple departments to use documents from a shared data source, and the ability to log, track and approve document changes, saves time, reduces scrap and streamlines rework.

RealVision DocManager 5.0 solves these problems by offering a complete document and change management solution that scales from small business to enterprise-level shop floors.

RealVision DocManager 5.0 enhancements include:

- Usability changes to simplify information retrieval and screen navigation so engineers and managers can make more informed decisions.
- Configurable access rights for individual users and departments to approve ECNs for streamlined workflow.
- Enhanced search allows users to find information using quick search criteria, boolean searches and filtering.
- New “Cut/Mfg” feature offers point-and-click access to selected documents to replicate them in a special folder for manipulation without affecting the originals.
- Ability to quickly create a BOM from multiple document sources for prototyping and testing.
- SMNP support for email applications that cannot support Microsoft MAPI.

RealVision DocManager is expandable into an even broader shop floor solution by integrating with other RealVision standalone applications, or with our complete shop floor ProDocTivity Suite. RealVision ProDocTivity™ complementary and customizable standalone shop floor solutions include:

More-

- [RealVision Integrator™](#) – integrates tooling and shop floor data as a simplified MES (manufacturing execution system).
- [RealVision WebDNC™](#) – enhances inventory control with powerful machine tool tracking and life monitoring, CNC networking and programming.
- [RealVision Preventative Maintenance RPM™](#) – combines tooling and shop floor data with preventative maintenance schedules to help prolong tool and equipment life.
- [RealVision ProDocTivity Suite™](#) – provides a complete, integrated, and economical shop floor productivity solution portfolio.

About RealVision, Inc.

With 25 years of experience, RealVision customizable manufacturing solutions' expert knowledge of shop floor operations is built into each product. Built *by* engineers *for* engineers, these practical solutions easily adapt to manufacturing environments to provide the efficiency and flexibility needed to increase shop floor productivity, integrate tooling data with CNC, reduce scrap, maintain equipment life, and manage production systems. Contact RealVision today at 1-800-487-1031 to learn how RealVision can boost your business' bottom line, or visit www.RealVisionMfgSolutions.com.

- END -

